

8SMC5-USB compatibility with Newport motorized stages:

Motorized stages based on stepper motors:

MFA-PP Miniature Linear Stage;

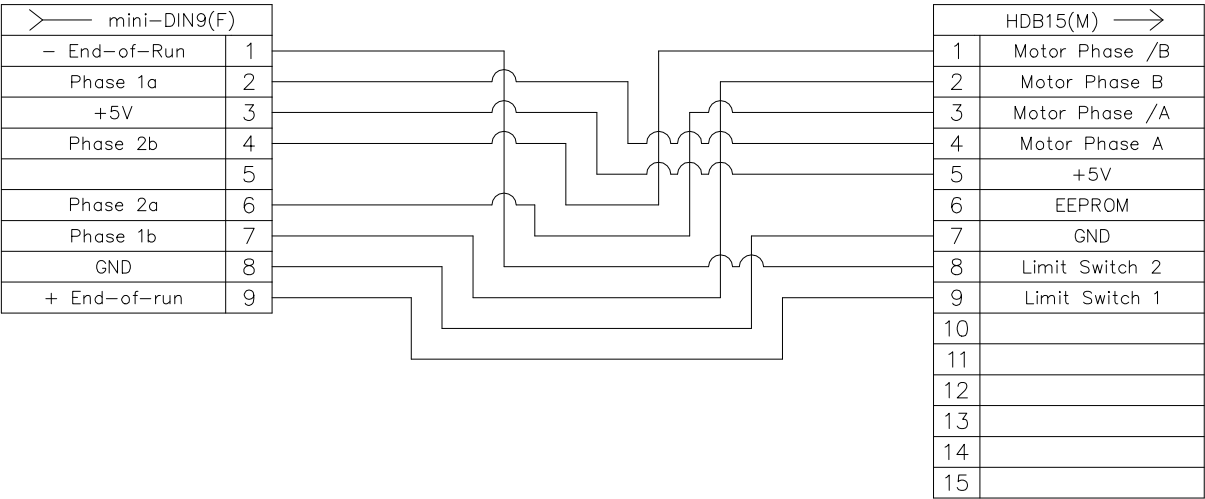


Figure 1. Adapter for Newport stepper motor stages

MFA-PPD Miniature Linear Stage;
TRA-PPD Series Compact Motorized Actuators;
TRB-PP Series Compact Motorized Actuators;

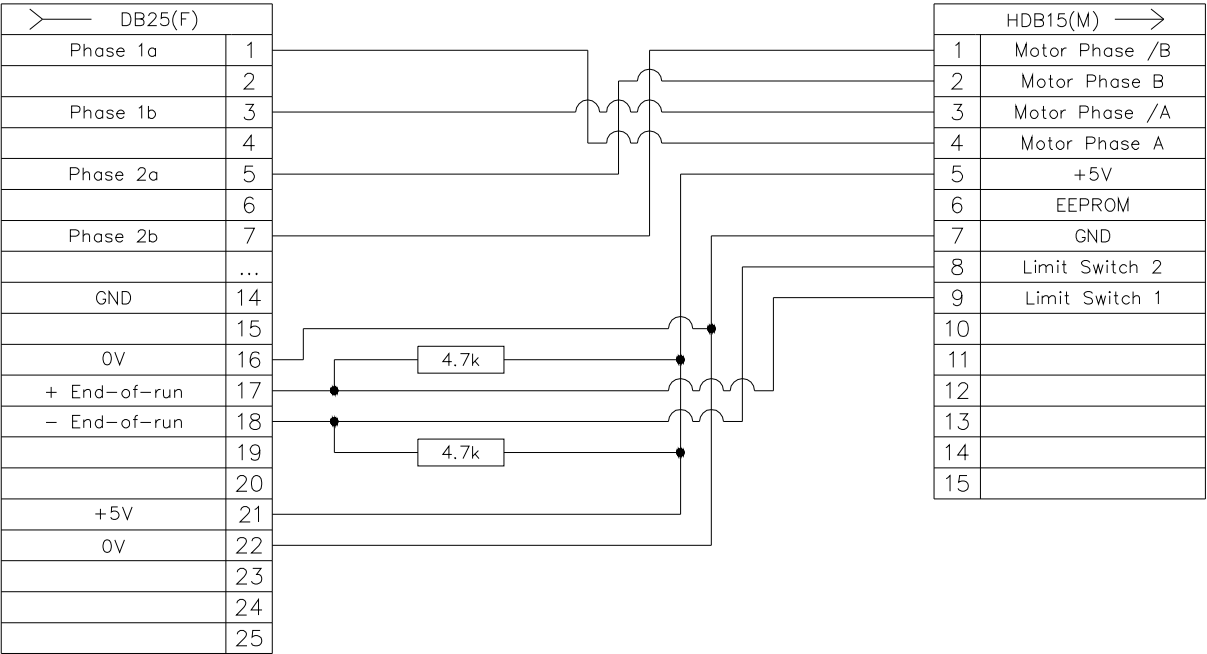


Figure 3. Adapter for Newport stepper motor stages

LTAHSPPV6 and LTAHLPPV6 Series Precision Long-Travel and High-Speed Motorized Actuators;

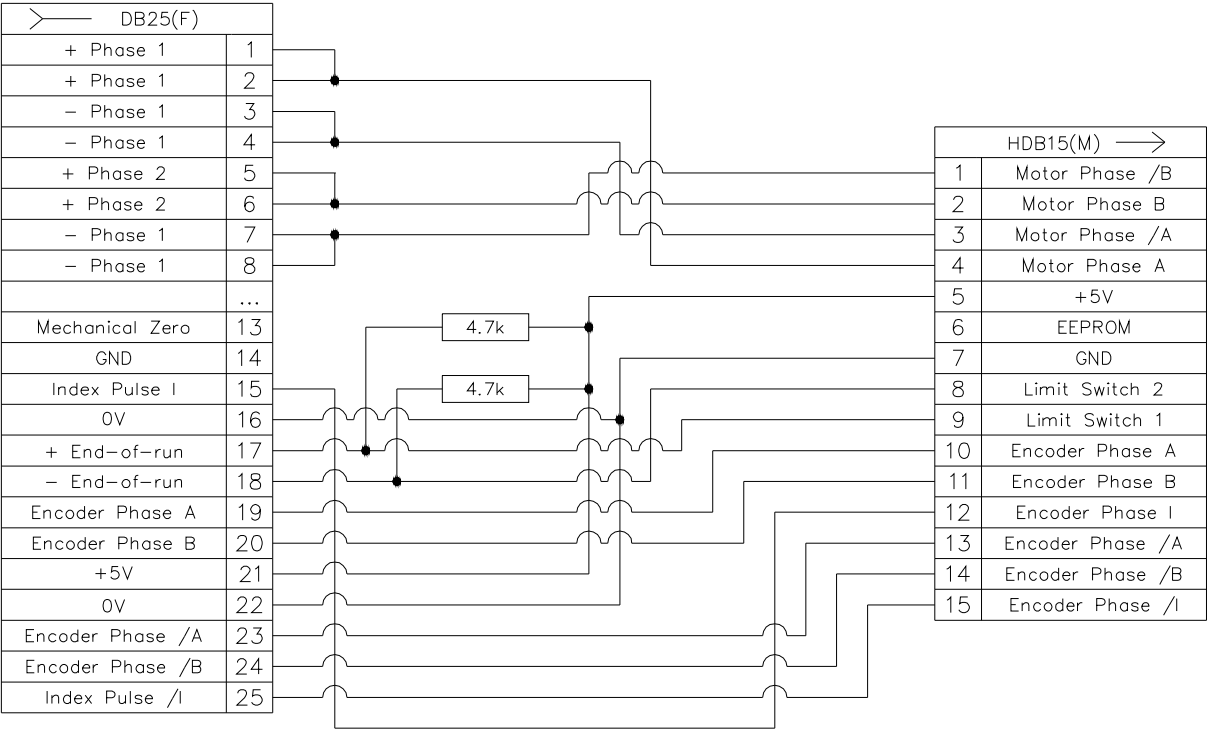


Figure 4. Adapter for Newport stepper motor stages

SR50PP Series Compact High-Resolution Rotation Stages (c/a);
BGS50PP Series Goniometric Cradles (c/a);

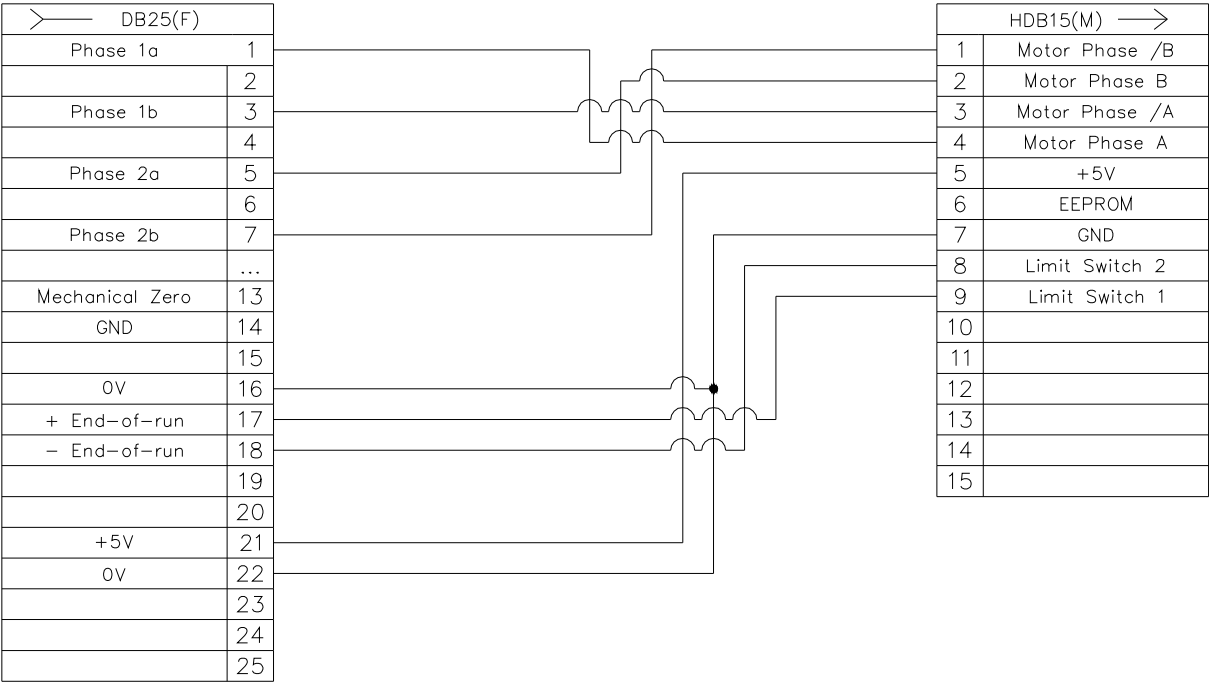


Figure 5. Cable/adaptor for Newport stepper motor stages

UTS-PP and UTS-PPV6 Series High-Performance Precision Translation Stages (c);
FMS-PP Series Linear Metrology Stages (c);
URS50CPP, URS75BPP to URS150BPP Precision Rotation Stages (c/a);

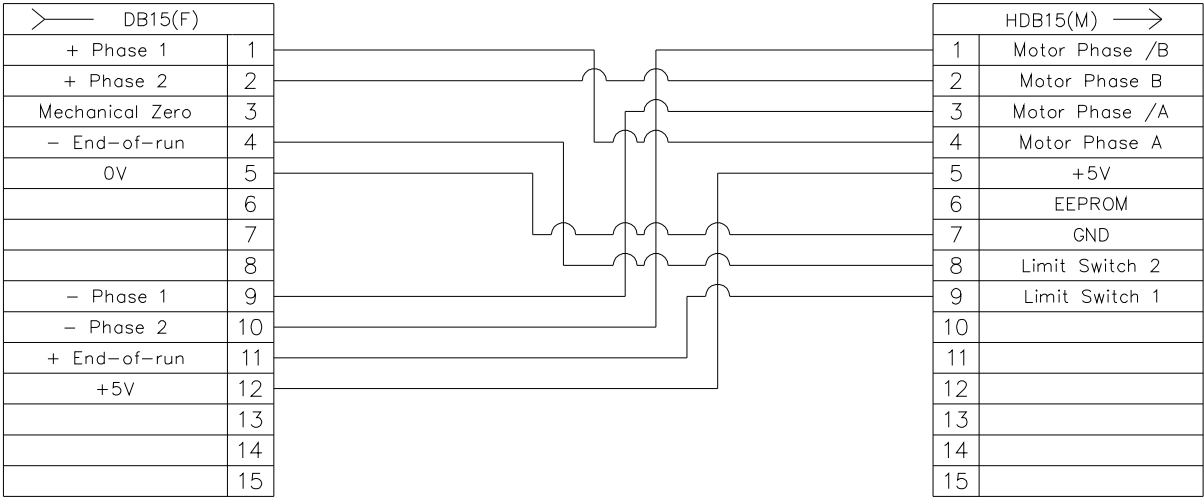


Figure 6. Cable/Adapter for Newport stepper motor stages

ILS-BPP Series High-Performance Mid-Range Travel Linear Stages (c/a);
 MTN-PP and MTN-PPV6 Series Mid-Travel Steel Linear Stages (c/a);
 FMS-PPHA Series Linear Metrology Stages (c/a);
 RV120 to RV350PP, RV120PE, RV120PEBV6, RV160 to 350PE High-Performance Precision Rotation Stages (c/a);
 ZVR-PP, ZVR-PP and ZVR-PC Integrated Vertical and Rotation Stages for Wafer Positioning (c/a);
 BGM-BPP and –PE, BGS50PP, BGS80PP Series Goniometric Cradles (c/a);

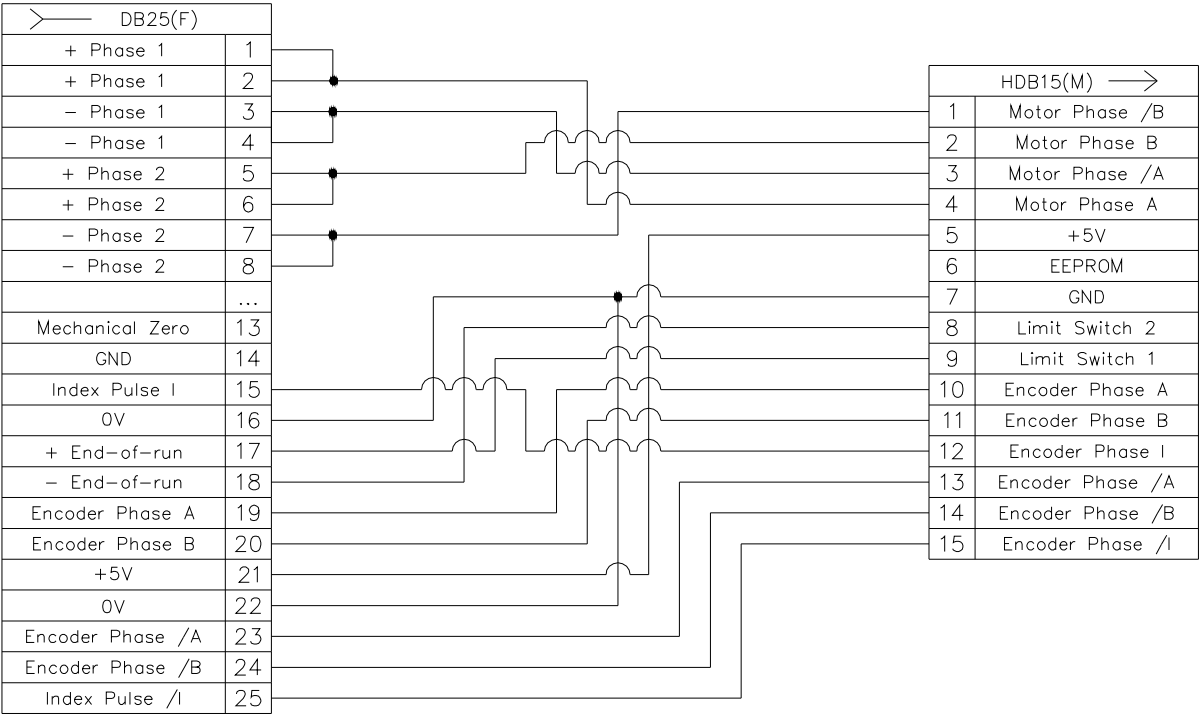


Figure 7. Cable/adaptor for Newport stepper motor stages

Motorized stages based on DC motors:

- MFA-CC Miniature Linear Stage;
- TRA-CC Series Compact Motorized Actuators;
- LTA-HS and LTAHL Series Precision Long-Travel and High-Speed Motorized Actuators;
- TRB-CC Compact Motorized Actuators;

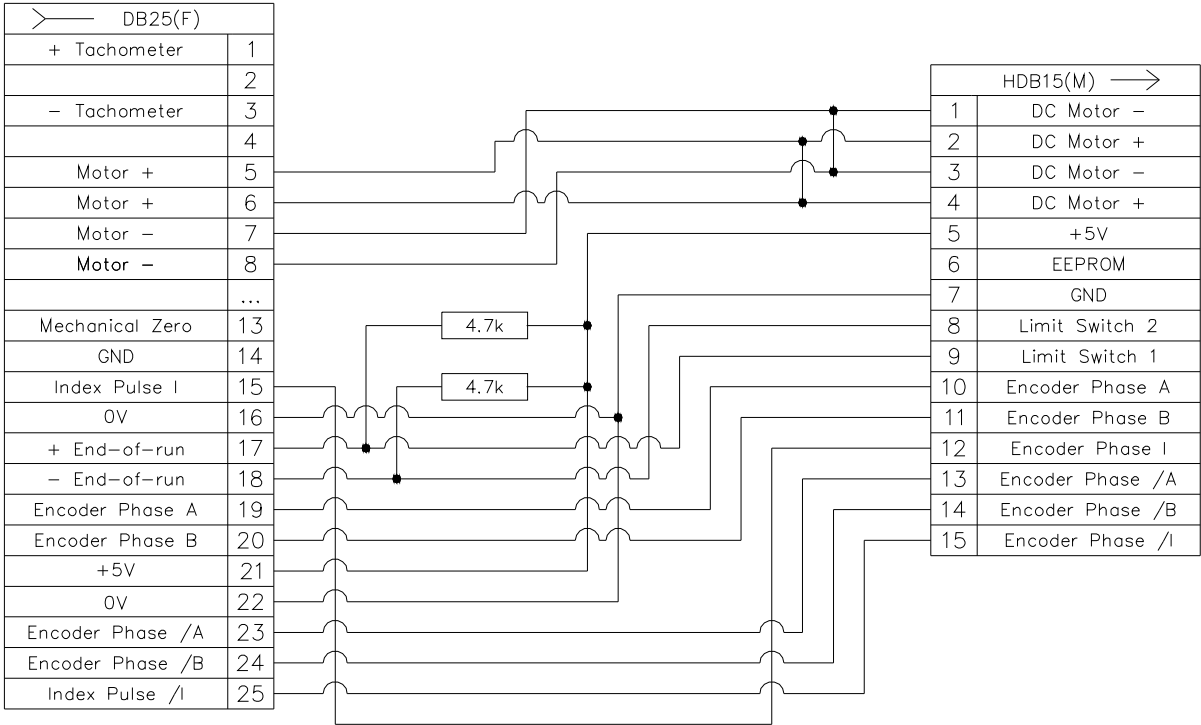


Figure 8. Adapter for Newport DC motor stages

UTS-CC Series High-Performance Precision Translation Stages;
 FMS-CC Series Linear Metrology Stages;
 URS50BCC, URS75BCC to URS150BCC Precision Rotation Stages;
 ZVR-PC Integrated Vertical and Rotation Stages for Wafer Positioning
 BGS80CC Series Goniometric Cradles;
 URB100CC High-Speed Belt-Driven Rotation Stage;

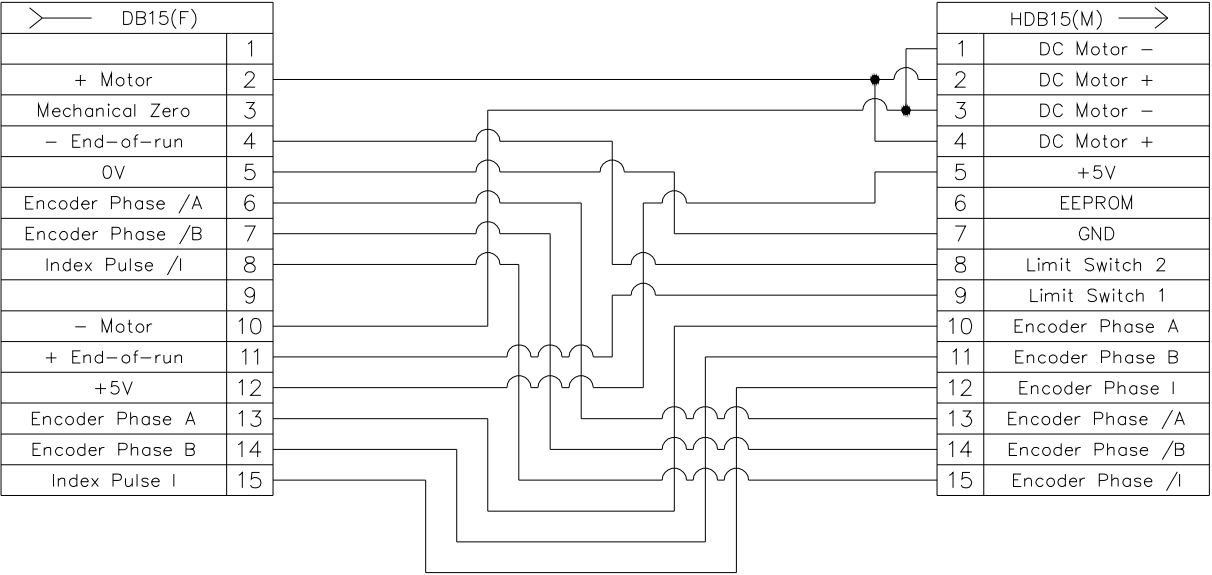


Figure 9. Cable for Newport DC motor stages

- ILS-CC, ILS-CCL and ILS-HA Series High-Performance Mid-Range Travel Linear Stages (c/a);
- VP-25XA Precision Compact Linear Stage (a);
- GTS Series High Precision Linear Stages (c/a);
- RV120 to RV350CC, RV120HAT, RV160HAT, RV240HAT, RV350HAT, RV120CCHL, RV160 to RV350CCHL, RV120HAHL, RV160HAHLT, RV240HAHLT, RV350HAHLT High-Performance Precision Rotation Stages (c/a);
- URB100CC High-Speed Belt-Driven Rotation Stage (a);
- ZVR-PC Integrated Vertical and Rotation Stages for Wafer Positioning (c/a);
- BGM-CC Series Goniometric Cradles (c/a);
- MTN-CC Series Mid-Travel Steel Linear Stages (c/a);
- SR50CC Series Compact High-Resolution Rotation Stages (c/a);
- BGS50CC, BGS50CC Series Goniometric Cradles (c/a);
- VP-25AA High-Performance Precision Motorized Actuator (a);

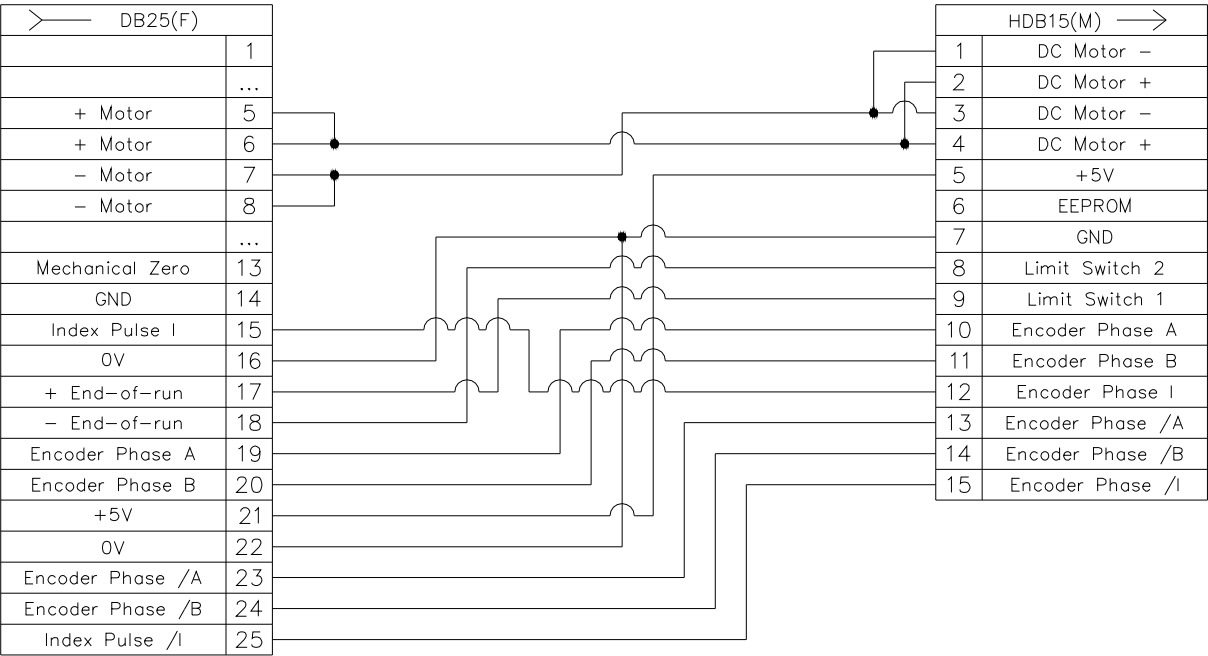


Figure 10. Cable/adaptor for Newport DC motor stages

Motorized stages based on BLDC motors:

ILS-LM Series High-Performance Linear Motor Stages;
RGV Series High-Speed Precision Rotation Stages;

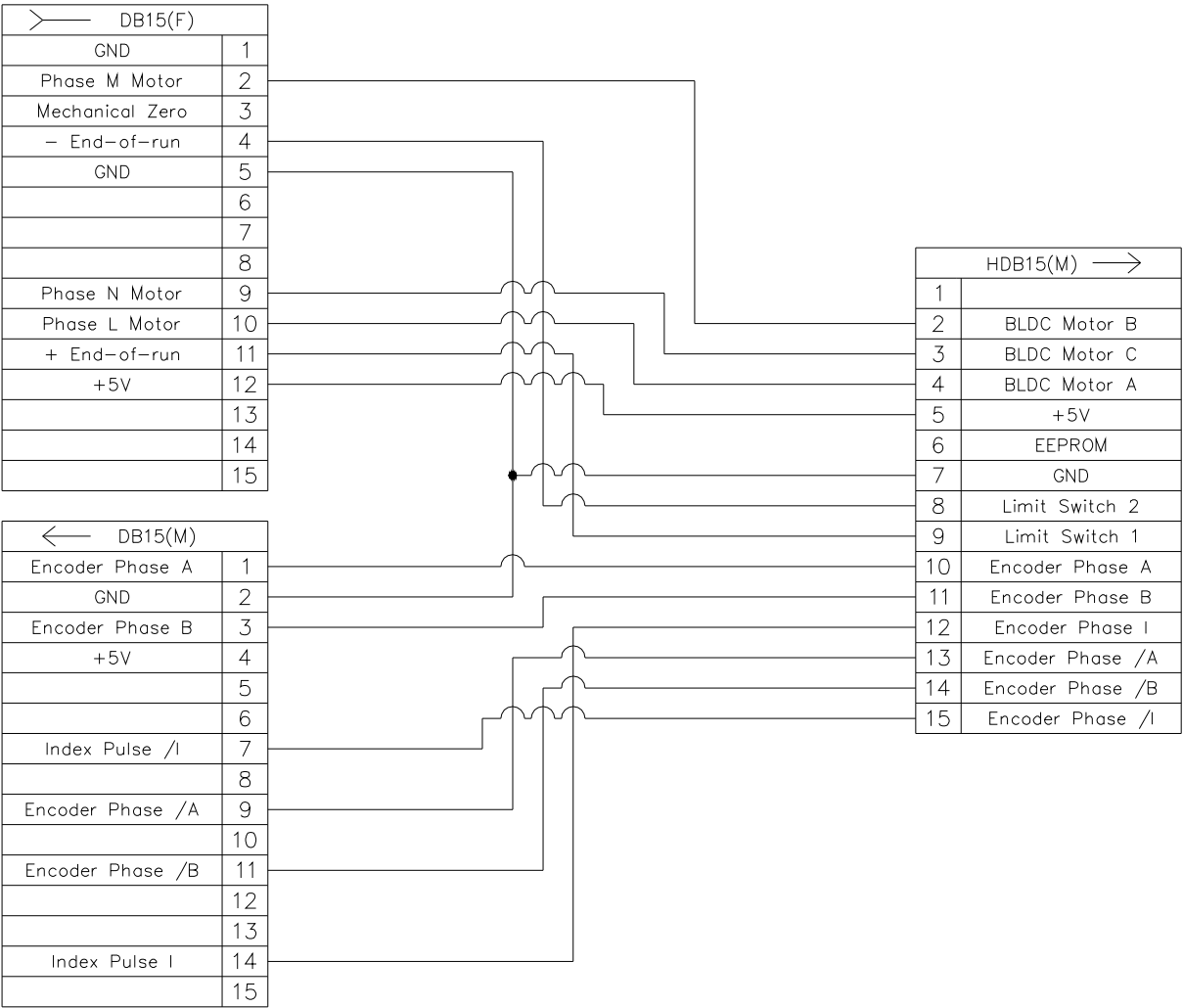


Figure 11. Cable for Newport BLDC motor stages

MTN-BLHS Series Mid-Travel Steel Linear Stages;

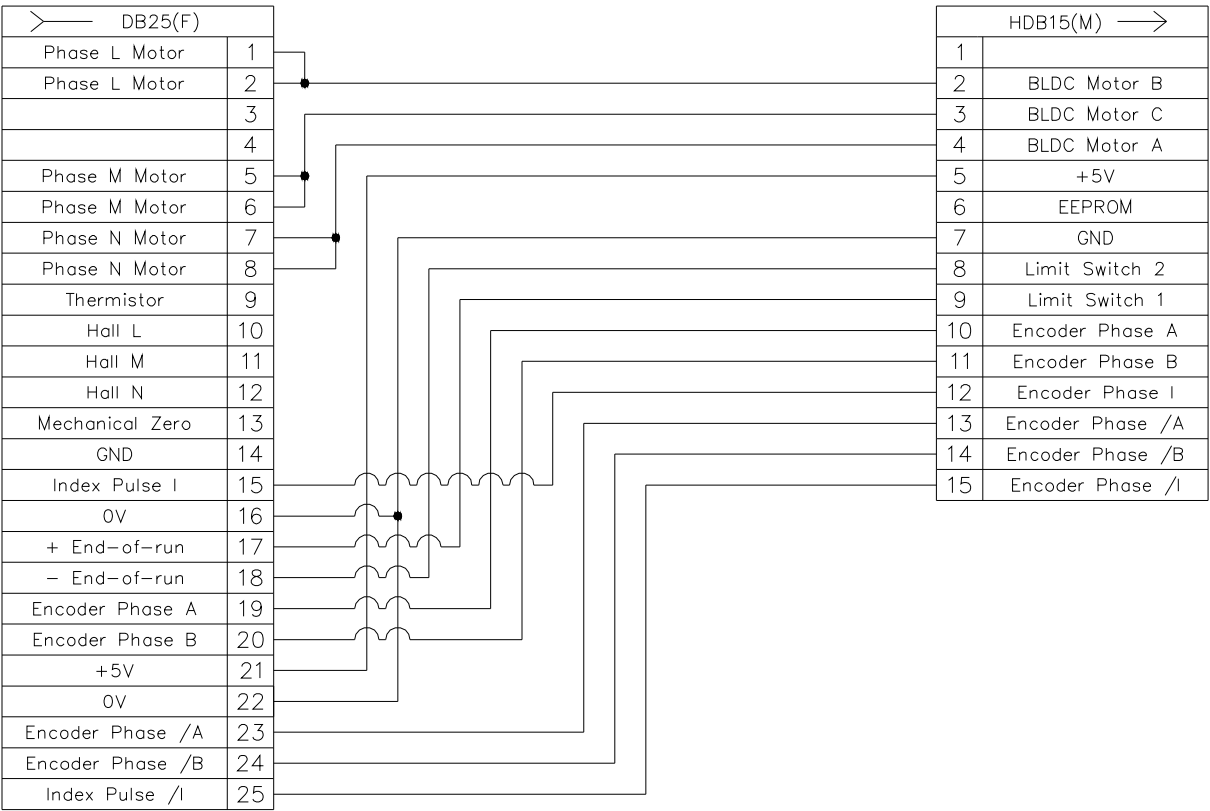


Figure 12. Cable for Newport BLDC motor stages